

## TrueNet® Frame

Managed density with unrivalled cable management



Innovative cable management

Easy to ship

Quick to install



## The TrueNet® Frame – innovative cable management that's easy to ship and quick to install

**From blades to gateways, from routers to hubs, the number of connections in a data centre is increasing dramatically. The TrueNet® Frame from ADC KRONE offers an effective solution to help manage density and ensure optimum network performance.**

The demands being placed on data centres are growing exponentially, while at the same time floor space is at a premium. Consequently enterprises are looking for the highest possible density of cabling solutions.

But, simply increasing the density of connectivity can also create new challenges. High cable volume may actually increase costs as it will impair access and leads to unacceptable stress and pressure on cables, harming the integrity of the network. Today's networks must be flexible enough to adapt to changing business needs and densely populated frames make adaptability more or less impossible.

The TrueNet® Frame from ADC KRONE provides the ideal solution. Rather than simply increasing connectivity, the frame focuses on cabling management protecting high performance cables from undue stress and maintaining their minimum bend radius to ensure that the network integrity is not compromised.

### **Designed for the next generation of cabling**

Ever more sophisticated data centres require the highest levels of data throughput without bit errors. To support ever higher data rates, precision-engineered cable is being used and these cables need special care and management. Additionally, they are often less pliable and have a larger diameter than standard cabling, which means they demand more space too.

The TrueNet® Frame protects this high performance cabling through extendable cable management arms and moveable cable routers. The minimum bend radius is maintained and stresses are kept at an absolute minimum, ensuring business-critical connectivity.

TrueNet® Frame



KRONE

#### **Technical Assistance:**

**Europe & Middle East**  
+32 2 712 6542  
euro.tac@adckrone.com  
www.adckrone.com/en

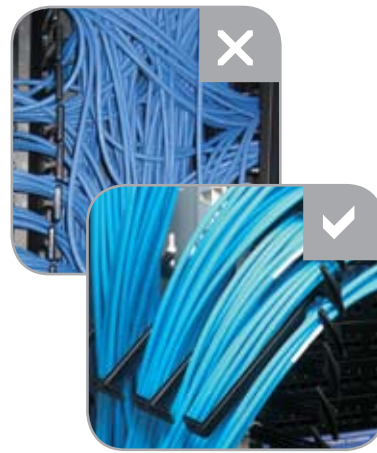
**South Africa**  
+27 11 466 3333  
infos@adckrone.com

**United Kingdom**  
0800 960236  
contactuk@adckrone.com

### Delivering density and flexibility

Enterprise customers rely on more and more connections, yet high density all too often has a detrimental effect on Moves, Adds and Changes (MACs). As cables may block access to patch panels, bending adjacent patch cords to gain access may force them beyond their minimum bend radius. Damage may also occur to plugs and outlets. Network outage can also happen when a patch cable is inadvertently removed or 'knocked' due to lack of visibility and access.

The TrueNet® Frame provides a simple and effective solution. Thanks to unique cable management features and flexible horizontal patch run options, initial installations and MACs are now much easier, clear and faster and system outages can be reduced to an absolute minimum.



### Rapid deployment and installation

Time is at a premium. Enterprises need their data centres to be up and running instantly, even though they are often situated in locations that are difficult to reach. Current solutions are bulky, making delivery to their final installation point challenging. In addition, current frames require the use of cage nuts and bolts to fix equipment. The TrueNet® Frame makes installation and deployment faster thanks to a unique pre-assembled design. A single engineer can move the frame easily through low corridors and stair wells, in addition a simple yet robust fixing mechanism for patch panels and other 19" equipment, reduces the installation time considerably.



### Harness the benefits with a market-leading solution

- Flexibility – ideal for any type of installation and cabling, ranging from compact Category 5e to the more demanding Category 6<sub>A</sub>
- Superior management – the very best cable management solution to ensure network performance and life span
- Rapid deployment – a pre-assembled rack manufactured from lightweight materials that can be shipped, unpacked and erected quickly, reducing labour and thus installation cost
- Everything you need to install, including cable management and panel fixings, comes in an easy to transport package.



TrueNet® Frame





## An unrivalled solution from the world leaders

ADC KRONE is a world-leading provider of 10 Gigabit solutions. Our extensive experience in the development of copper connectivity for today's network solutions as well as our leading role in developing future standards have guided the development of the TrueNet® Frame.

TrueNet® Frame

### **Improve density, manageability, speed of MACs and network integrity**

In today's data centre, the fine balance between cost, density and manageability is becoming ever more important. The ADC KRONE TrueNet® Frame offers one of the most flexible solutions.

- A number of cable routing features promote a natural cable flow for horizontal cables, including Category 6<sub>A</sub> unshielded solutions
- The TrueNet® Frame makes patching easier, not only allowing higher density but also ensuring easier access during and after initial installation
- Extendable management arms mean that jumper bars are no longer needed, reducing cost and allowing higher density and easier access.



**Technical Assistance:**  
**Europe & Middle East**  
+32 2 712 6542  
euro.tac@adckrone.com  
www.adckrone.com/en

**South Africa**  
+27 11 466 3333  
infos@adckrone.com

**United Kingdom**  
0800 960236  
contactuk@adckrone.com

## No compromise on size

Traditional frames often come in standard footprints, which can inhibit the efficiency of a data centre. For instance, standard frames and cabinets may not be fully utilised, therefore taking up more space than they need. Alternatively, when higher density is needed for more demanding solutions, standard cabinets may be too small.

The TrueNet® Frame allows installers to tailor the size of the solution, creating the ideal balance between density and manageability.

### Flexible patching

The TrueNet® Frame is fitted with extendable management arms, negating the need for jumper bars. This doesn't just reduce cost, it allows higher density and easier access once the frame has been installed.



### More manageable

Most networks offer mid-frame solutions for patch cable runs between frames. Research conducted by ADC KRONE engineers has found that mid-frame horizontal patch runs can be inefficient, causing crossovers of patch cables and making MACs a real challenge.

The TrueNet® Frame solves this problem by introducing flexible horizontal patch run options, including 'top of frame' and 'bottom of frame'. This greatly reduces any crosses between horizontal and vertical patches, helping enterprises to manage MACs much more effectively. By running horizontal patch leads over trays at the bottom of the cabinet, manageability, airflow and aesthetics is greatly improved.

TrueNet® Frame



### **Ensure networks are in place quickly and cost-effectively**

Shipping and on-site assembly of frames can be challenging and time consuming. The TrueNet® Frame makes transportation and installation easy, saving labour and costs.

### **Rapid deployment...**

Enterprises need networks that can be rapidly deployed, yet shipping pre-assembled frames can increase the cost and environmental impact of transportation. Moreover, it can be difficult or impossible to manoeuvre pre-assembled frames through corridors, lifts and doors.

The TrueNet® Frame negates these issues by being flat packed. Thanks to a unique and patented pre-assembled solution as well as its lightweight materials, the TrueNet® Frame can easily be transported and manoeuvred on site by a single engineer. After being carried flat to the site, the frame can be assembled in less than 2 minutes.

### **...Rapid installation**

Installing and erecting the TrueNet® Frame is a truly one-man job. The assembly simply requires the tightening of eight pre-installed bolts. Unpacking and preparing the frame takes less than two minutes, in comparison with competitor solutions that can take several hours to put together.

### **Saves hours compared to traditional frames**

Traditional frames require engineers to fasten a number of cage-nuts and bolts for installation. To take just one example, in a frame of 32 panels, there are 128 cage-nuts and bolts to be fixed and checked.

The TrueNet® Frame reduces this labour with a revolutionary quick fit solution. Patch panels are simply secured in position and fixed in place with just two clicks. The cable management arms also negate the need for jumper bars, eliminating the need for another 64 cage nuts and bolts in a typical 32 patch panel configuration.

TrueNet® Frame



KRONE

#### **Technical Assistance:**

**Europe & Middle East**  
+32 2 712 6542  
euro.tac@adckrone.com  
www.adckrone.com/en

**South Africa**  
+27 11 466 3333  
infosaf@adckrone.com

**United Kingdom**  
0800 960236  
contactuk@adckrone.com

## A summary of the benefits

- Reduced shipment costs thanks to a unique preassembled flat-pack design
- Easy to navigate through buildings, with a compact and light shipment size
- Ready to install rapidly in any location, a truly one-man job
- Higher density, manageability and network integrity thanks to unrivalled cable management
- Rapid deployment thanks to a unique fastening method for patch panels and other 19 inch equipment
- No cage nuts and bolts
- Can be used as a standard solution for bespoke customer requirements
- Improves aesthetics as well as performance

**Make sure your business can rely on the very best cable management system – contact ADC KRONE to talk to your local representative.**

TrueNet® Frame



TrueNet® Frame



KRONE



**Web Site:** [www.adckrone.com/en](http://www.adckrone.com/en)

**UK Office:** ADC Communications (UK) Ltd., Runnings Road, Kingsditch Trading Estate, Cheltenham, Gloucestershire GL51 9NQ, United Kingdom • Phone: +44 (0) 1242 264 400 Fax: +44 (0) 1242 264 488  
contactuk@adckrone.com

**South African Office:** ADC Telecommunications (Africa) PTY Ltd., 16 Brand Hatch Close, Kyalami Business Park, Midrand, 1685, Johannesburg, South Africa • Phone: +27 11 466 3333 Fax: +27 11 466 3300  
Email: infosa@adckrone.com

**EMEA Office:** ADC GmbH, Beeskowdamm, 3-11, 14167 Berlin, Germany • Phone: +49 30 8453 1818  
Fax: +49 30 8453 1703. For a listing of all ADC KRONE's global sales office locations, please refer to our web site.

Specifications published here are current as of the date of publication of this document. Because we are continuously improving our products, ADC KRONE reserves the right to change specifications without prior notice. At any time, you may verify product specifications by contacting ADC GmbH headquarters in Berlin. ADC Telecommunications, Inc. views its patent portfolio as an important corporate asset and vigorously enforces its patents.

**Part Number 200844BE Mar 09 Original © 2009 ADC Communications (UK) Ltd. All Rights Reserved**